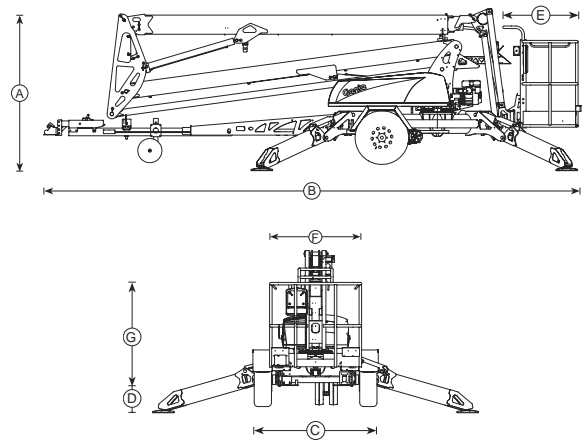
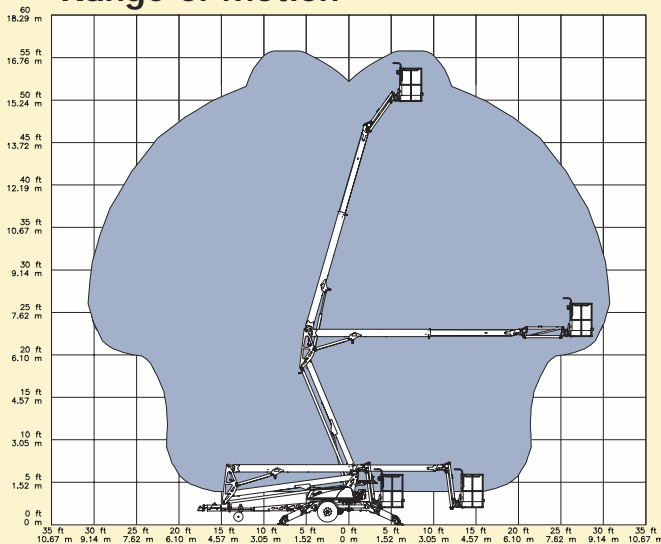


Standard Features

- 55 ft 6 in (17.1 m) working height*
- 29 ft 2 in (8.9 m) working outreach
- Hydraulic outriggers
- Outrigger interlocks
- Automatic leveling system
- Combination hitch, an adjustable height hitch coupler system with 2" ball coupler
- Variable speed control system
- AC wiring to platform
- Hydraulic surge brakes
- Parking brake
- Tilt alarm/sensor
- Dual jockey wheels
- Hour meter



Range of Motion



Specifications

Model	US	Metric
Working height*	55 ft 6 in	17.1 m
Platform height	49 ft 6 in	15.1 m
(A) Height – stowed	6 ft 9 in	2 m
(B) Length – stowed	22 ft	6.7 m
(C) Width – stowed	5 ft 6 in	1.68 m
(D) Ground clearance	10 in	25 cm
(E) Platform length	30 in	76 cm
(F) Platform width	44 in	1.1 m
(G) Platform railing height	44 in	1.1 m
Entry height	20 in	51 cm
Working outreach	29 ft 2 in	8.9 m
Up and over clearance	22 ft	6.7 m
Outrigger footprint – length	14 ft 4 in	4.37 m
Outrigger footprint – width	14 ft 4 in	4.37 m
Outrigger type	hydraulic	
Leveling capability	10°	10°
Lift capacity		
– ANSI, CSA	500 lb	227 kg
– CE	440 lb	200 kg
Turntable rotation	359° non-continuous	
Tow speed rating	60 mph	97 km/h
Power sources	DC: 24V (4 6V 245 AH batteries)	
	Hybrid: 24V (4 6V 245 AH batteries)	
	and Honda Gas 5.5 hp (4.1 kw)	
Gradeability	20%	20%
Tongue weight	400 lb	181 kg
Machine weight		
– ANSI, CSA, CE	4,400 lb	1,995 kg

Options and Accessories

- Hybrid DC/Gas
- Drive and set option includes larger battery
- Spare tire
- Battery charge indicator
- Fluorescent tube caddy
- Hydraulic platform rotation
- Non-marking outrigger footpads
- Operational warning light package (flashing beacon)
- Tool tray
- 2 3/8 in (6 cm) ball coupler
- 2 1/2 in (6.35 cm) I.D. Pintle ring coupler
- Clevis coupler

Standards Compliance

- ANSI A92.2
- CAN/CSA-C225-M88
- CE Compliance
- AS 1418.10

*The metric equivalent of working height adds 2 m to platform height. U.S. adds 6 ft to platform height.

Distributed By:

Genie Industries

GENIE UNITED STATES

18340 NE 76th Street
 P. O. Box 97030
 Redmond, Washington 98073-9730
 Telephone (425) 881-1800
 Toll Free in USA/Canada 800-536-1800
 Fax (425) 883-3475
<http://www.genieindustries.com>

GENIE UNITED KINGDOM

The Maltings, Wharf Road
 Grantham
 Lincolnshire NG31 6BH
 England
 Telephone: +44 (0)1476 584333
 Fax: +44 (0)1476 584334
<http://www.genieindustries.com>