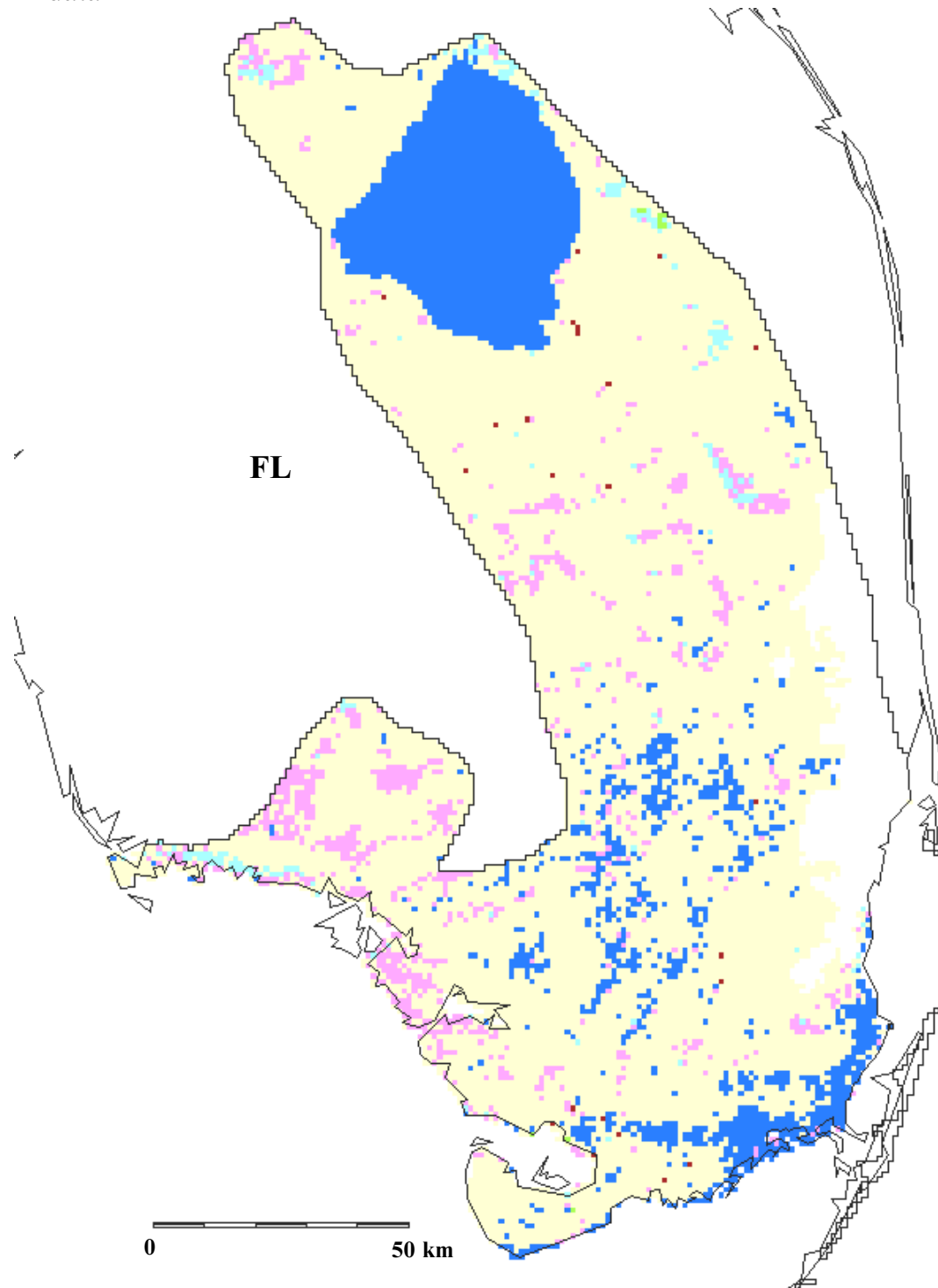






Forest cover types in Subtropical Florida, physiographic area 1, from USFS FIA data



|   |                                    |   |                            |
|---|------------------------------------|---|----------------------------|
|  | Oak-hickory forest                 |  | Longleaf slash pine forest |
|  | Loblolly-shortleaf pine forest     |  | Water                      |
|  | Oak-gum-cypress, bottomland forest |  | Nonforest                  |
|   |                                    |  | Urban, no data             |

Funding for the preparation of this map was provided by the National Fish and Wildlife Foundation, through a challenge grant to The Nature Conservancy, Wings of the Americas program. Matching funds for this grant were donated by Canon U.S.A., Inc.