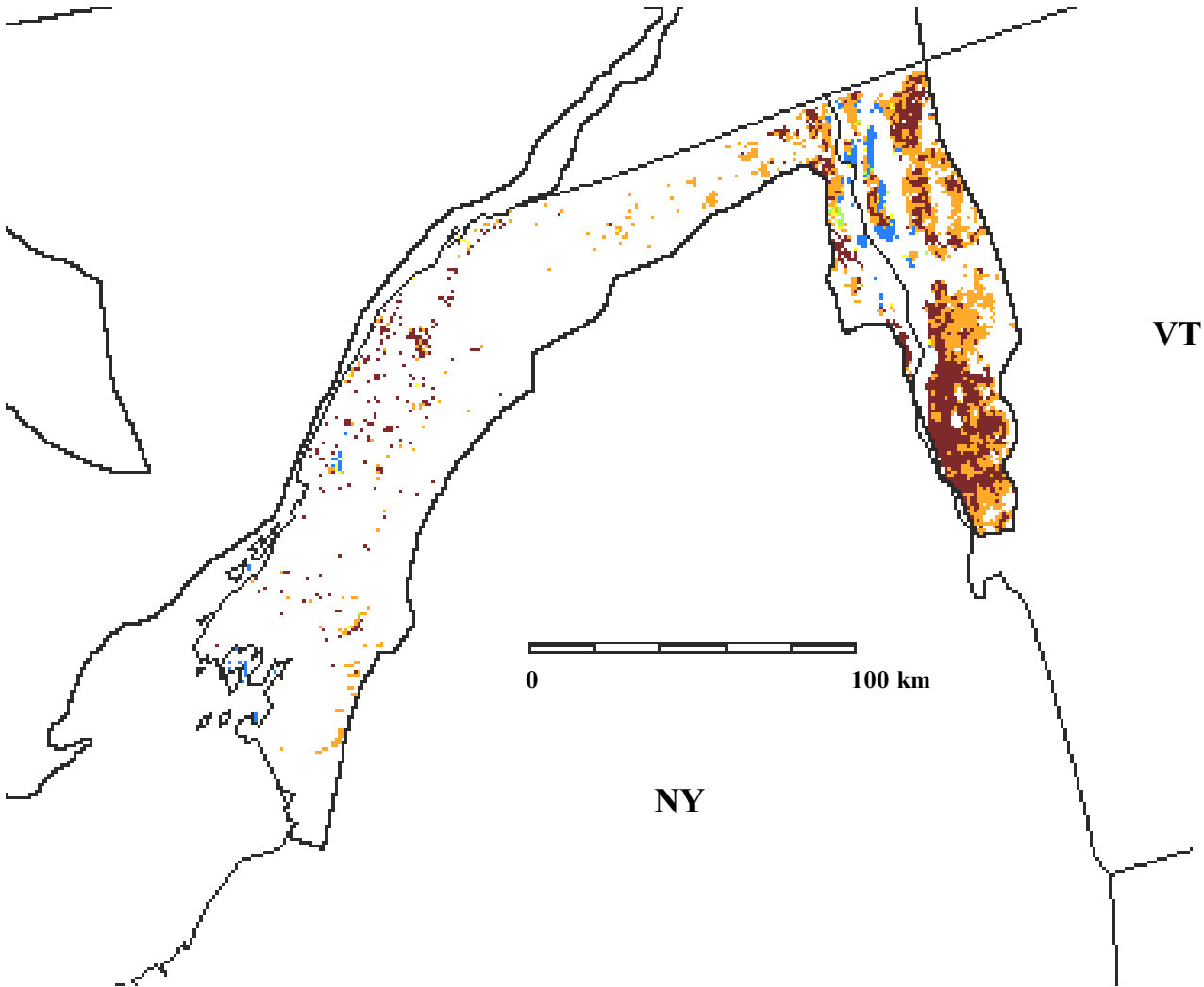


Nonforest cover types in the U.S. portion of the St. Lawrence Plain, physiographic area 18, from USGS data



	Wheat, small grains		Pasture, hay, mixed crops
	Corn, soybeans, irrigated agriculture		Water
	Bluestem, grama grassland		Canadian vegetation, USFS FIA U. S. forest coverage, urban

Funding for the preparation of this map was provided by the National Fish and Wildlife Foundation, through a challenge grant to The Nature Conservancy, Wings of the Americas program. Matching funds for this grant were donated by Canon U.S.A., Inc.