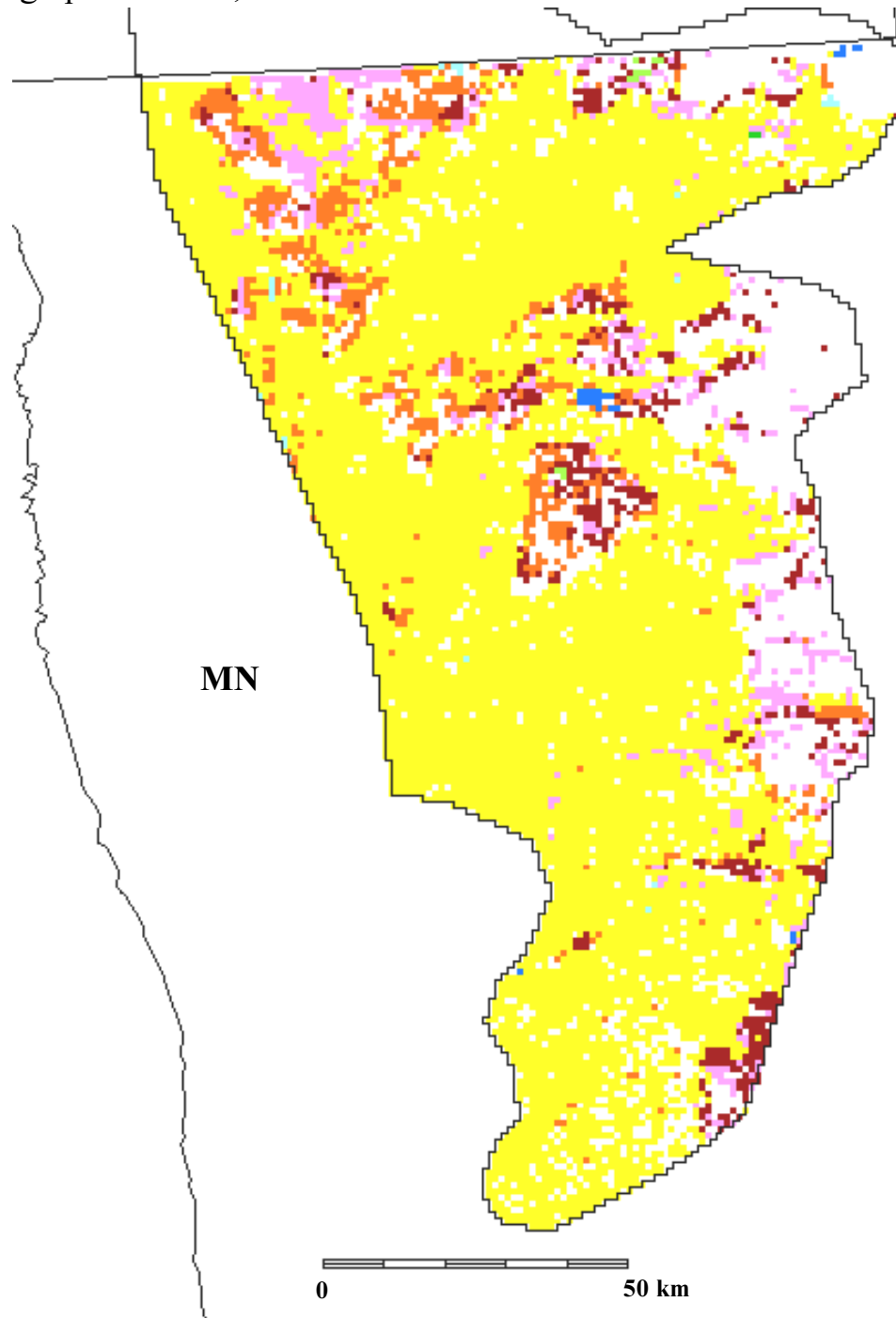
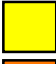


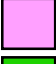







Forest and nonforest cover types in the U.S. portion of the Aspen Parklands, physiographic area 30, modified from USGS data



	Wheat, small grain crops		Oak-maple forest
	Corn, soybeans, irrigated agriculture		Maple-beech-birch forests
	Bluestem, wheatgrass grassland		Fir-spruce forests
	Pasture, hay, mixed crops		Water
			Forest and water coverage from USFS data

Funding for the preparation of this map was provided by the National Fish and Wildlife Foundation, through a challenge grant to The Nature Conservancy, Wings of the Americas program. Matching funds for this grant were donated by Canon U.S.A., Inc.