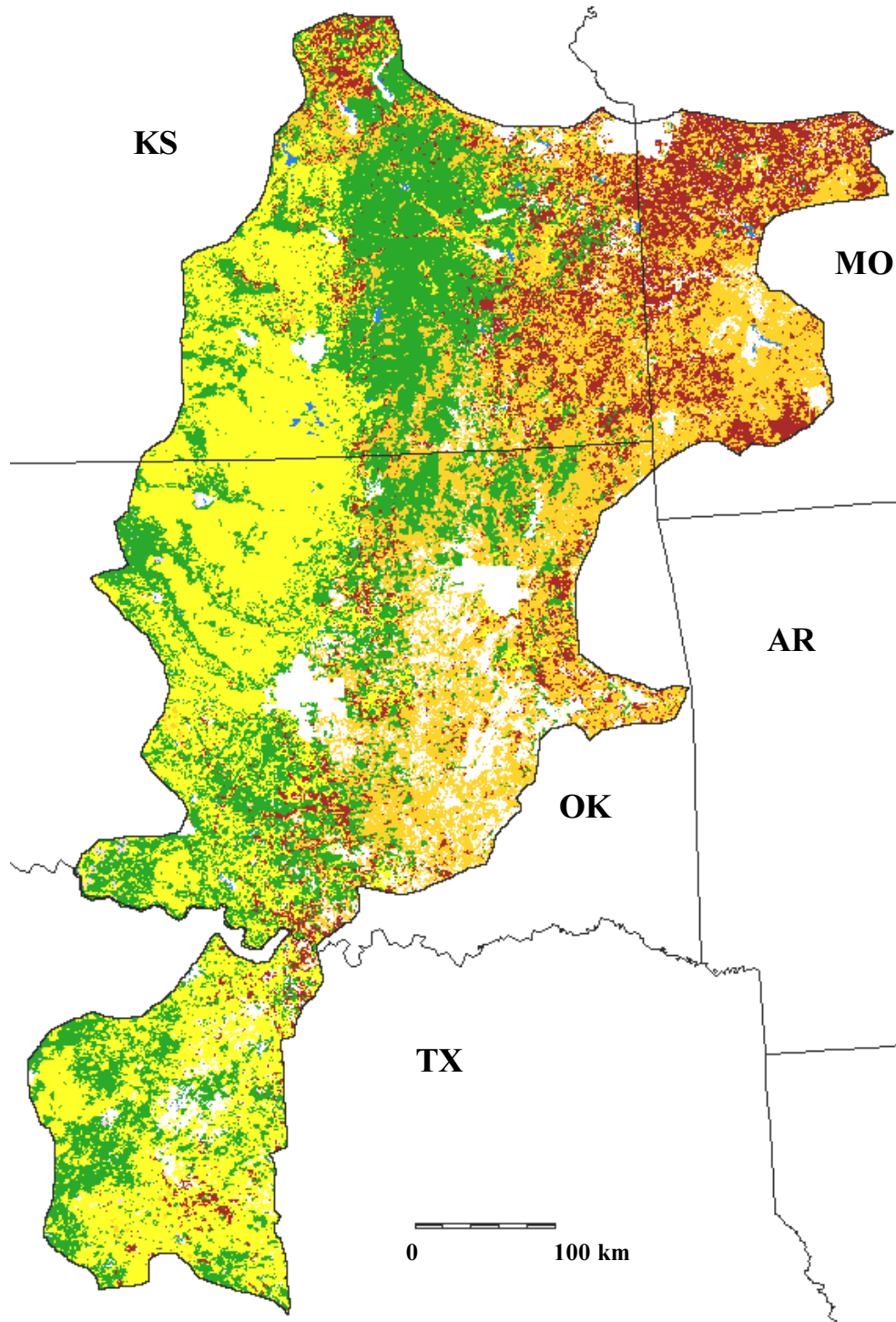









Nonforest cover types in the Osage Plains, physiographic area 33, modified from USGS data



	Wheat, small grain crops		Pasture, hay, mixed crops
	Corn, soybeans		Water
	Bluestem, grama, wheatgrass prairie		Forests and water from USFS FIA data, plus urban
	Sagebrush, greasewood, creosote		

Funding for the preparation of this map was provided by the National Fish and Wildlife Foundation, through a challenge grant to The Nature Conservancy, Wings of the Americas program. Matching funds for this grant were donated by Canon U.S.A., Inc.