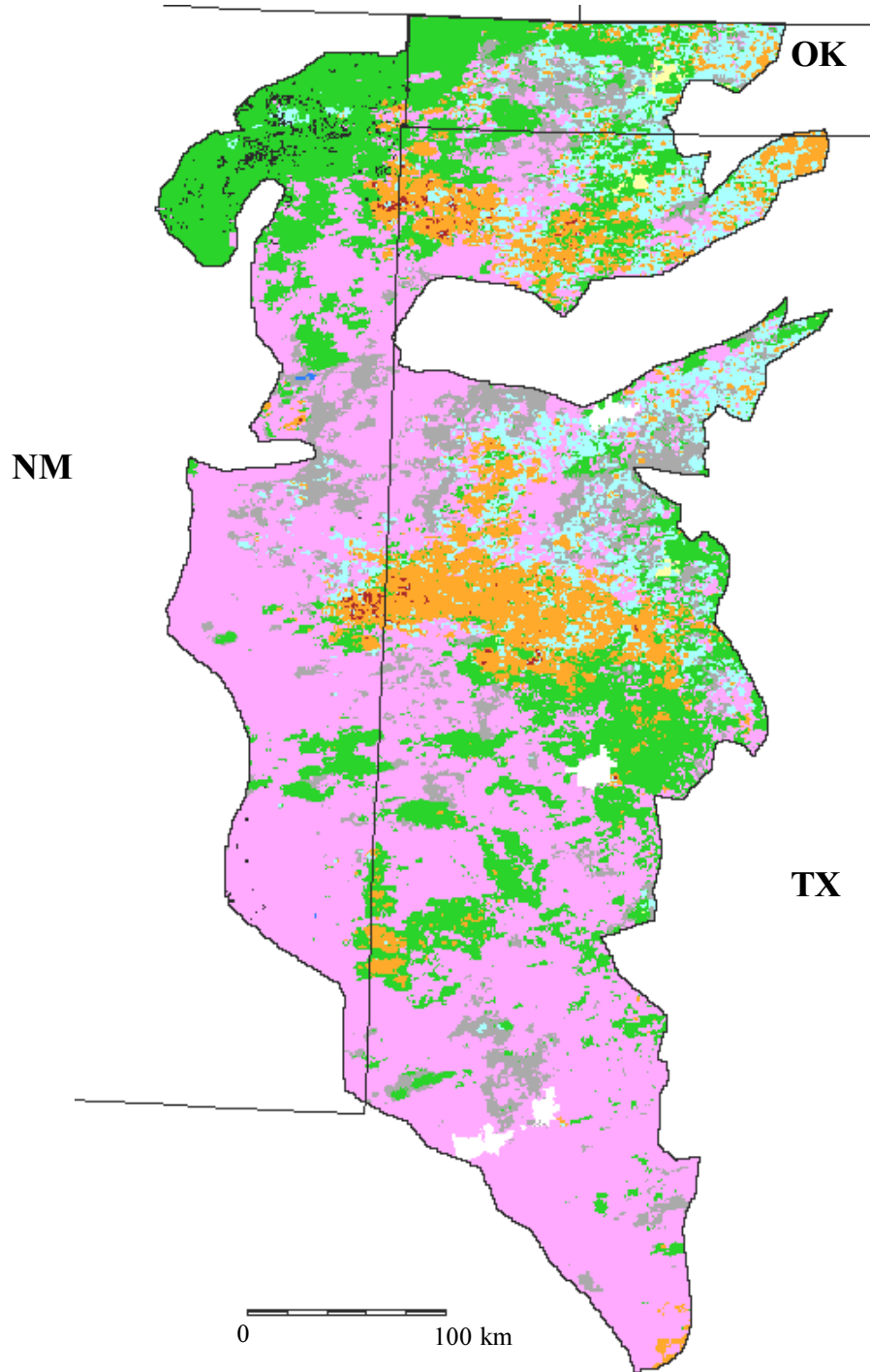











Forest and nonforest cover types in the Pecos and Staked Plains, physiographic area 55, from USFS FIA and USGS data



	Wheat, corn, soybeans, irrigated agriculture		Sagebrush prairie
	Bluestem grassland		Greasewood brushland
	Grama grassland		Pinyon pine-juniper forest
	Wheatgrass prairie		Water
	Pasture, hay, mixed crops		Urban

Funding for the preparation of this map was provided by the National Fish and Wildlife Foundation, through a challenge grant to The Nature Conservancy, Wings of the Americas program. Matching funds for this grant were donated by Canon U.S.A., Inc.