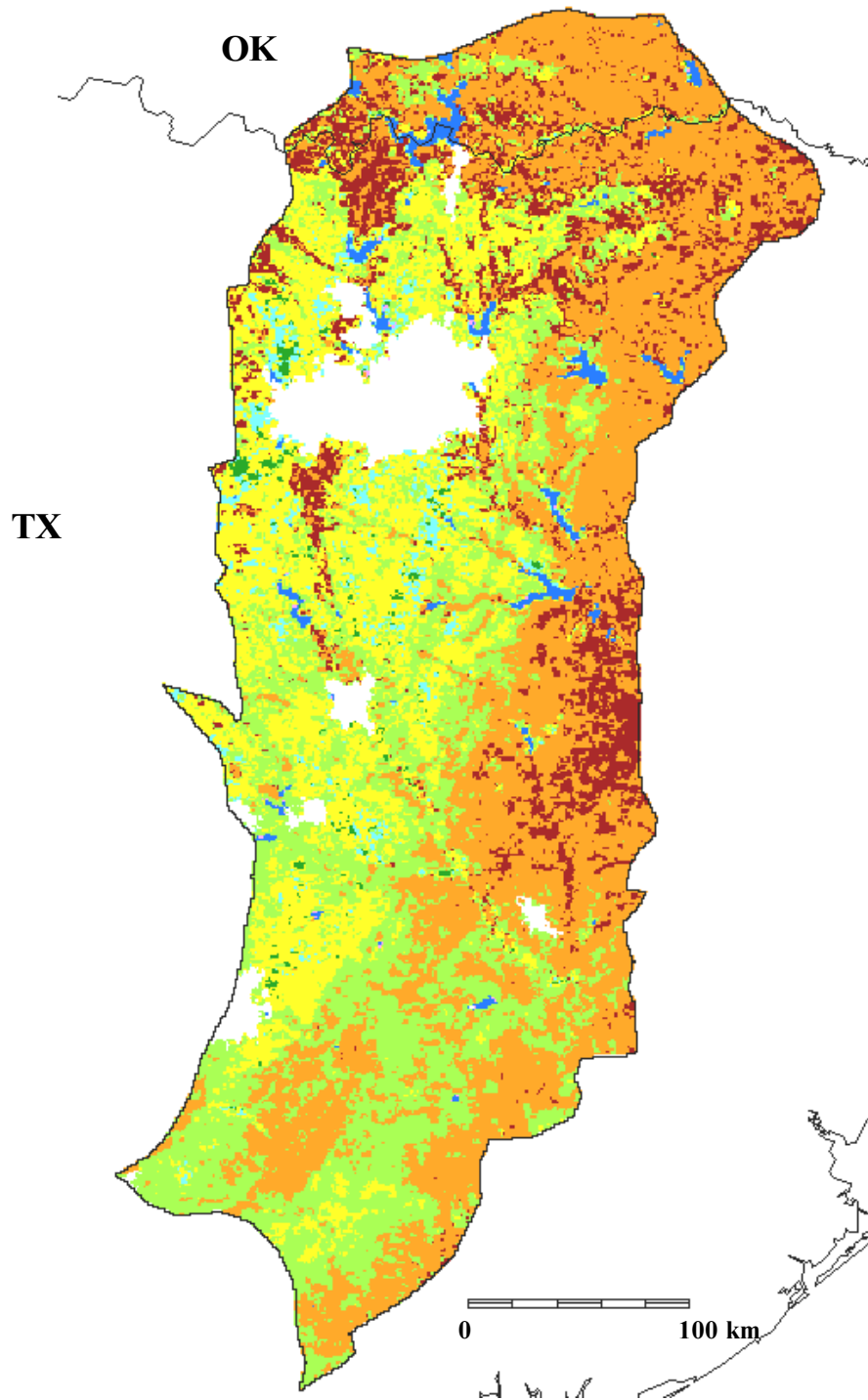











Nonforest cover types in the Oaks and Prairies, physiographic area 8, modified from USGS data



	Wheat, small grain crops		Greasewood, sagebrush brushlands
	Corn, soybeans, irrigated agriculture		Pasture, hay, mixed crops
	Bluestem grassland		Water
	Grama grassland		Forest and water coverage from USFS FIA data, plus urban
	Wheatgrass grassland		

Funding for the preparation of this map was provided by the National Fish and Wildlife Foundation, through a challenge grant to The Nature Conservancy, Wings of the Americas program. Matching funds for this grant were donated by Canon U.S.A., Inc.