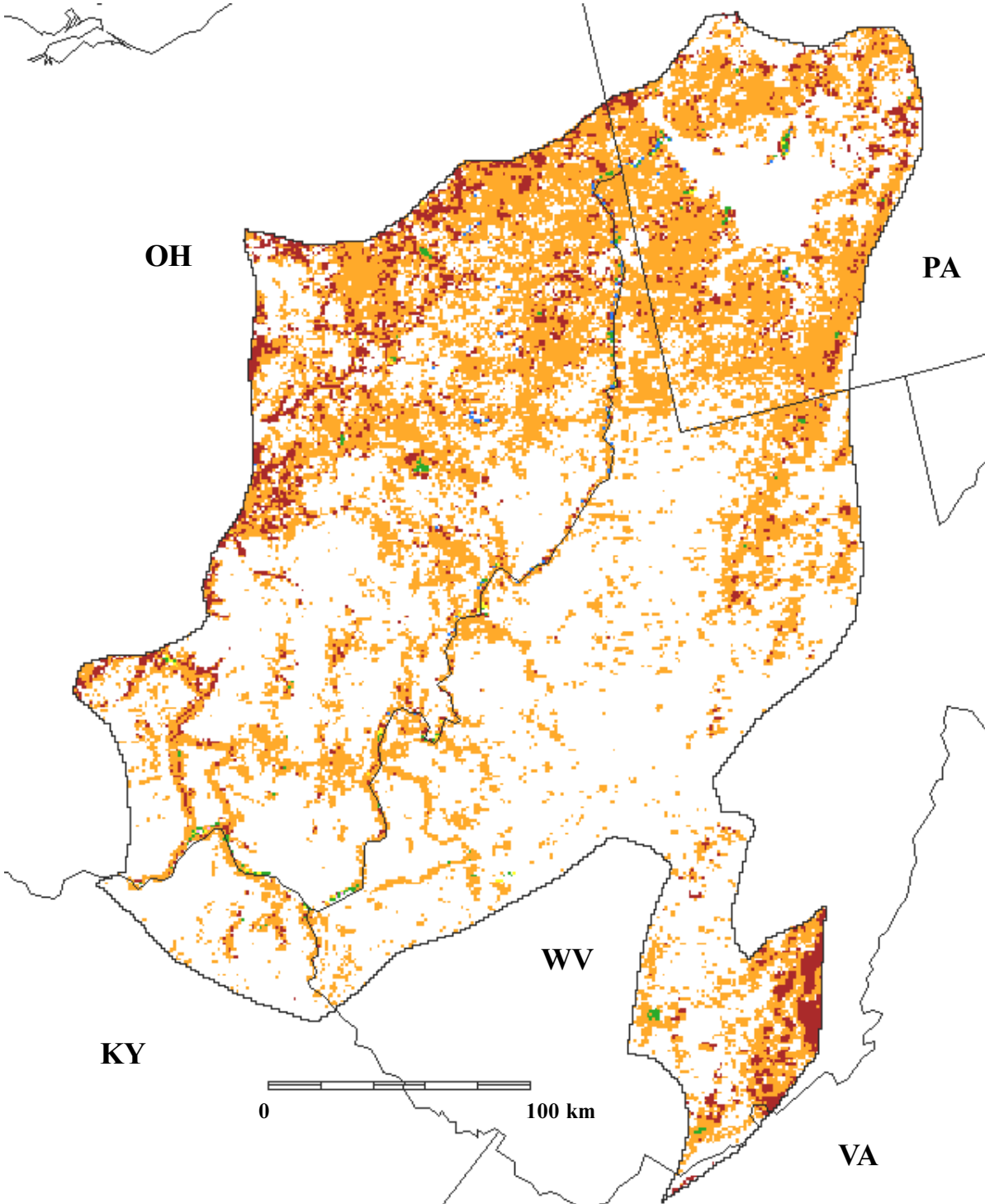





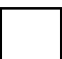



Nonforest cover types in the Ohio Hills, physiographic area 22, modified from USGS data



	Wheat, small grain crops		Pasture, hay, mixed crops
	Corn, soybeans, irrigated crops		Water
	Bluestem, grama, wheatgrass grasslands		Forest cover and water from the USFS data, plus urban
	Sagebrush, greasewood brushlands		

Funding for the preparation of this map was provided by the National Fish and Wildlife Foundation, through a challenge grant to The Nature Conservancy, Wings of the Americas program. Matching funds for this grant were donated by Canon U.S.A., Inc.