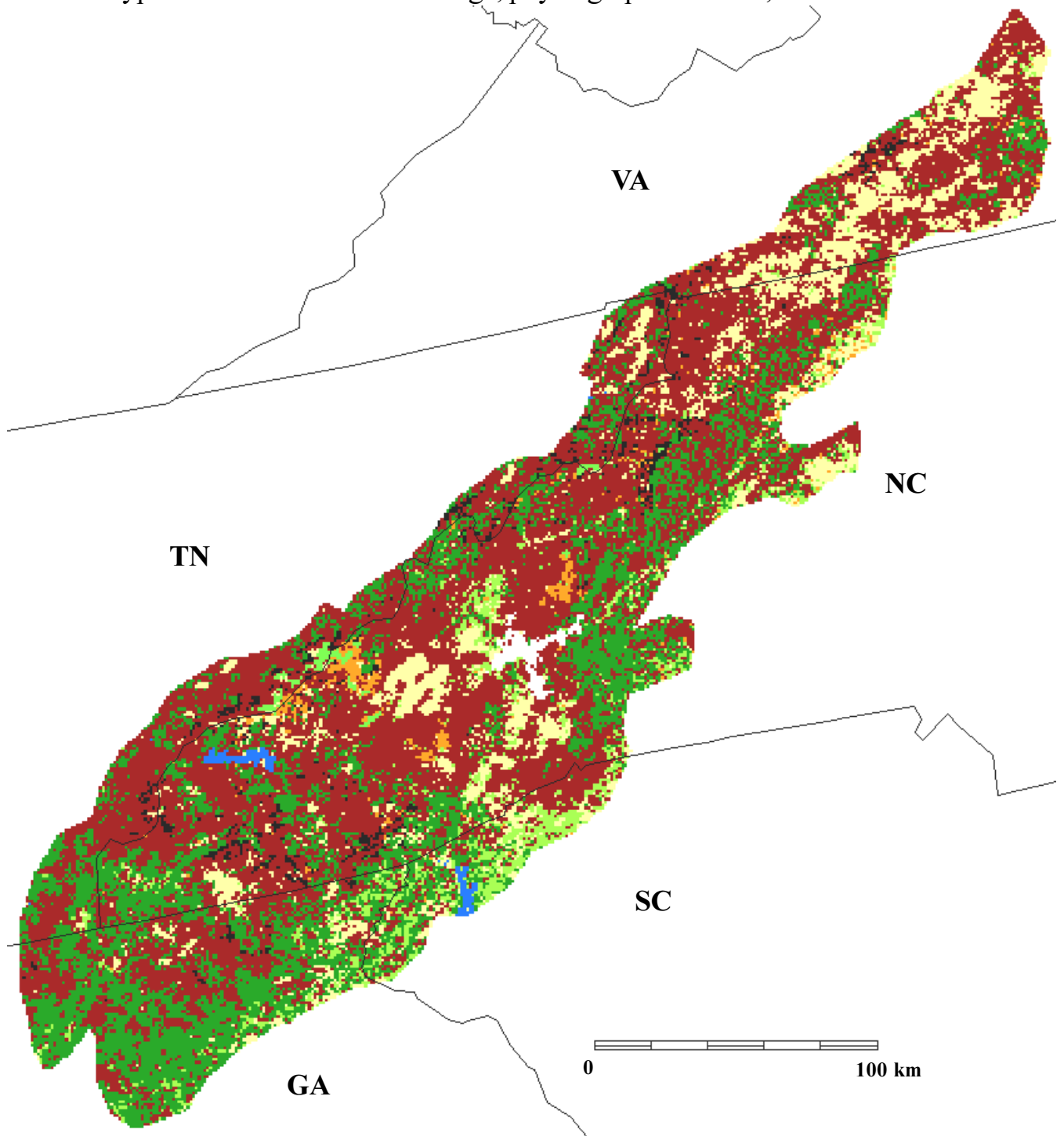











Forest types in the Southern Blue Ridge, physiographic area 23, from USFS FIA data



	White-red-jack pine forest		Maple-beech-birch forest
	Spruce-fir forest		Loblolly-shortleaf pine forest
	Oak-pine forest		Water
	Oak-hickory forest		Nonforest
			Urban

Funding for the preparation of this map was provided by the National Fish and Wildlife Foundation, through a challenge grant to The Nature Conservancy, Wings of the Americas program. Matching funds for this grant were donated by Canon U.S.A., Inc.