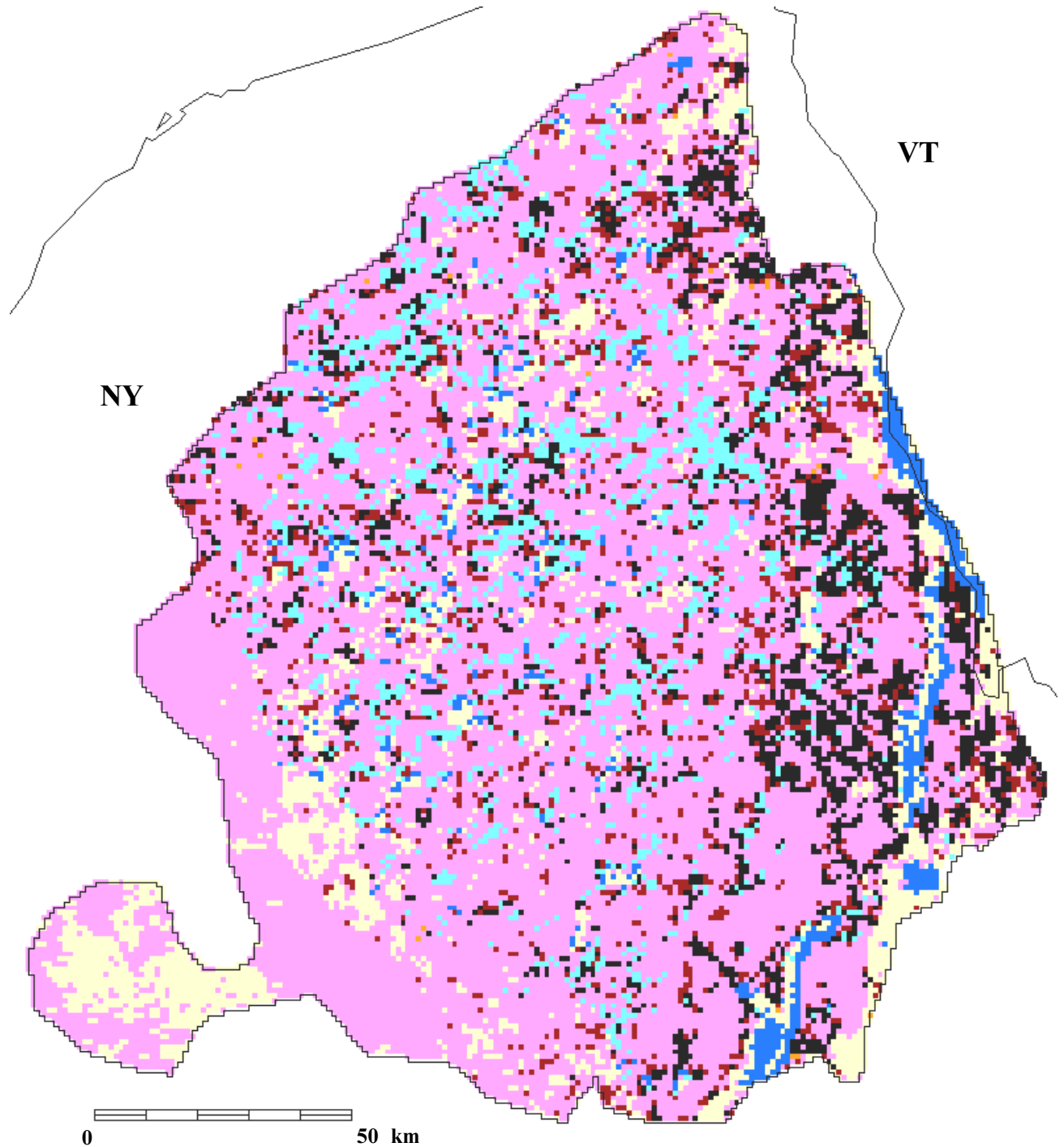






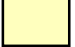


Forest types in the Adirondack Mountains, physiographic area 26, from USFS FIA data



	White-red-jack pine forests		Oak-hickory forests
	Spruce-fir forests		Maple-beech-birch forests
	Oak-pine, mixed hardwood forest		Water
			Nonforest

Funding for the preparation of this map was provided by the National Fish and Wildlife Foundation, through a challenge grant to The Nature Conservancy, Wings of the Americas program. Matching funds for this grant were donated by Canon U.S.A., Inc.