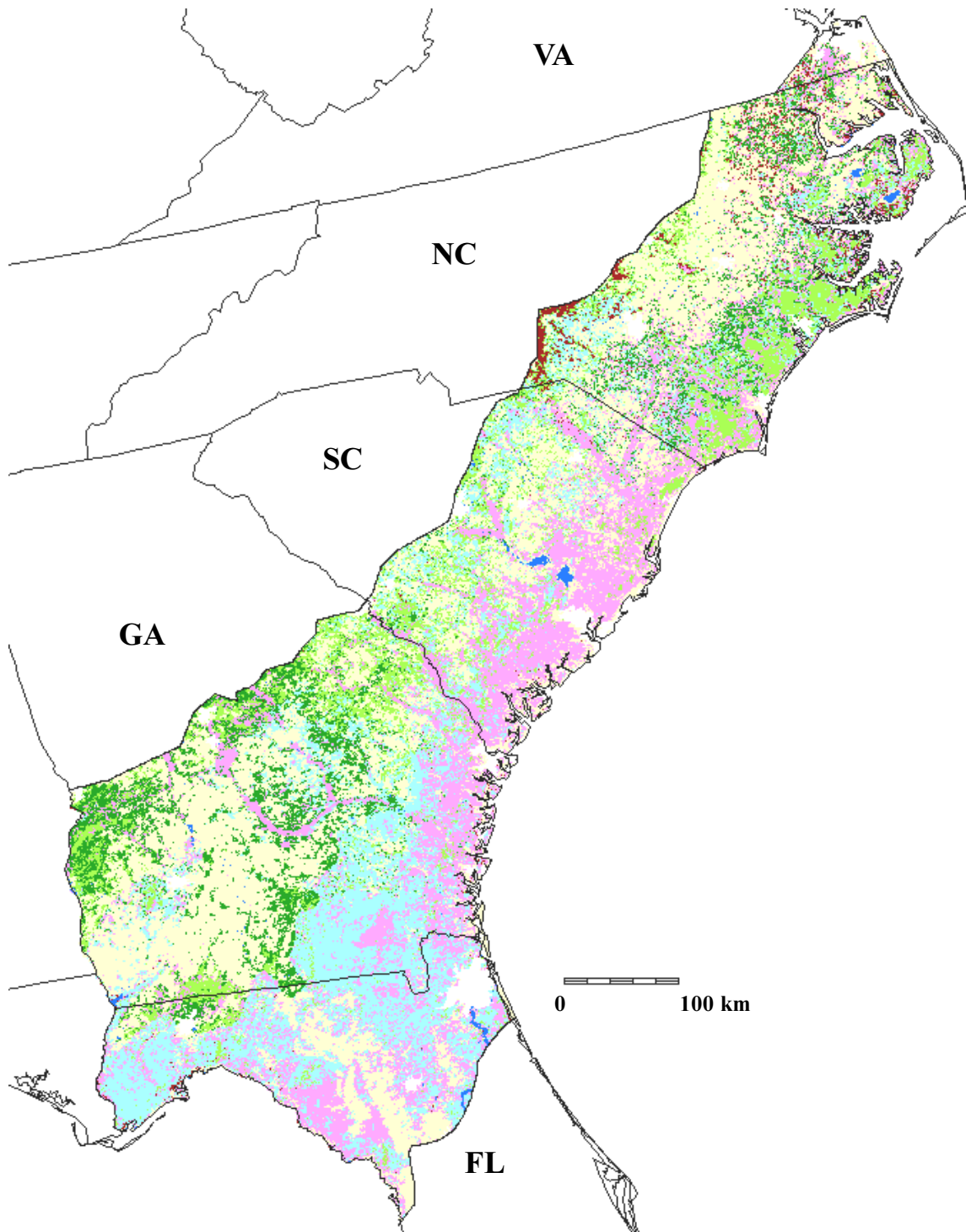


Forest cover types in the South Atlantic Coastal Plain, physiographic area 3, from USFS FIA data



	Oak-hickory forest		Longleaf slash pine forest
	Loblolly-shortleaf pine forest		Water
	Oak-pine forest		Nonforest
	Oak-gum-cypress, bottomland forest		Urban, no data

Funding for the preparation of this map was provided by the National Fish and Wildlife Foundation, through a challenge grant to The Nature Conservancy, Wings of the Americas program. Matching funds for this grant were donated by Canon U.S.A., Inc.