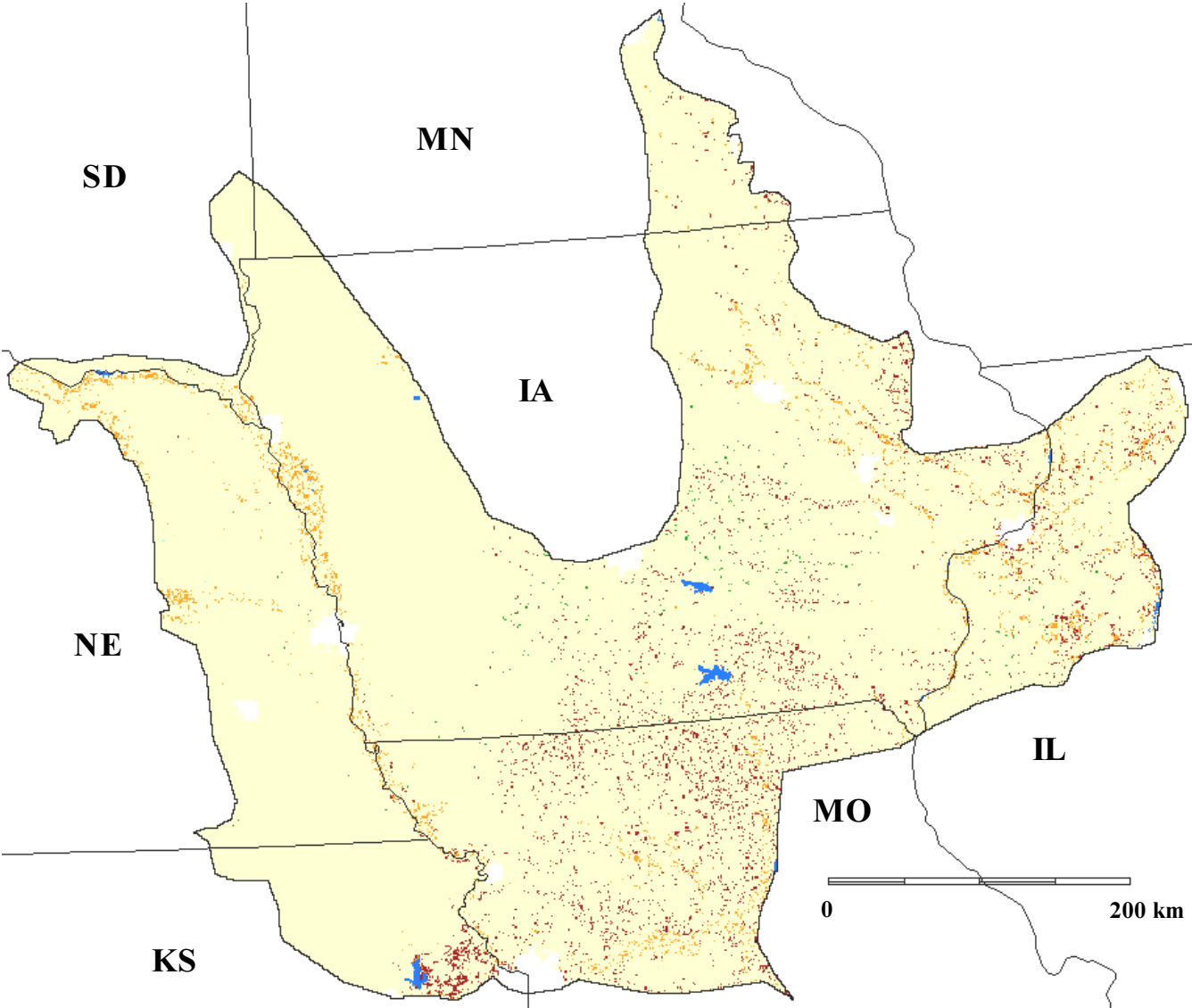









Forest types in the Dissected Till Plains, physiographic area 32, from USFS FIA data



	Ponderosa pine forest		Water
	Oak-hickory forest		Nonforest
	Elm-ash-cottonwood forest		Urban
	Maple-beech-birch forest		

Funding for the preparation of this map was provided by the National Fish and Wildlife Foundation, through a challenge grant to The Nature Conservancy, Wings of the Americas program. Matching funds for this grant were donated by Canon U.S.A., Inc.