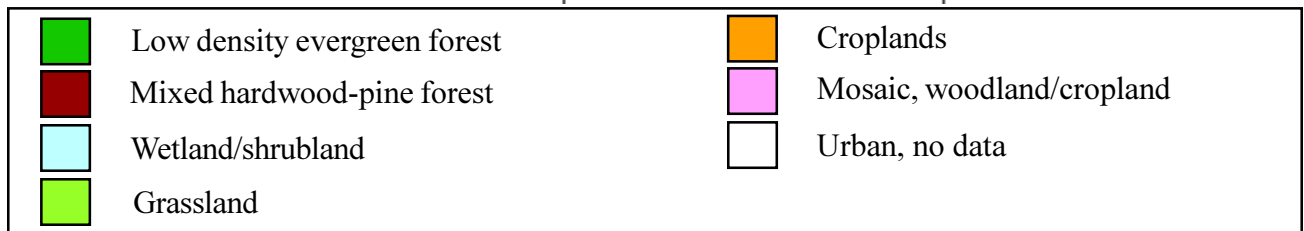
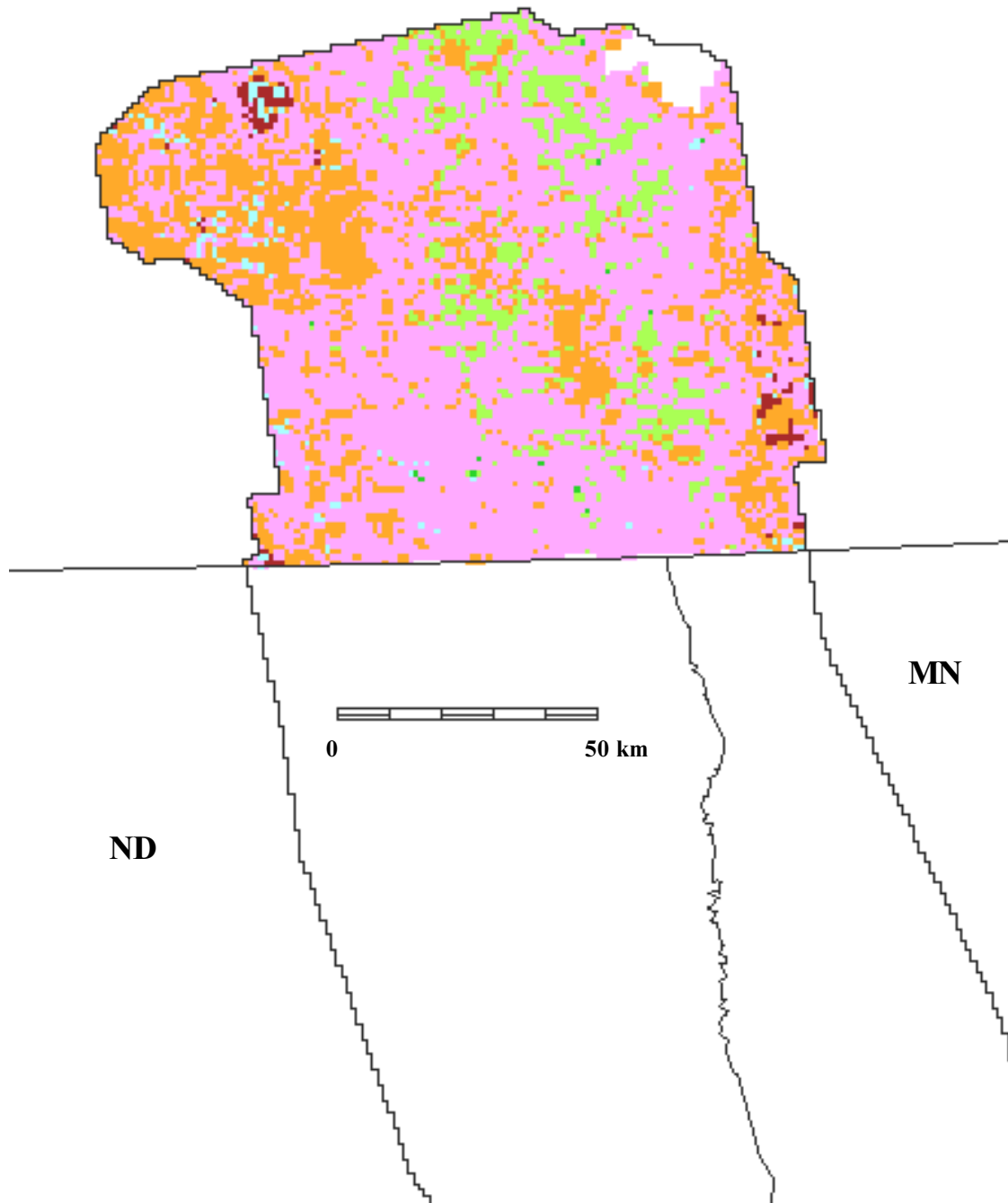


Forest and nonforest cover types in the Canadian portion of the Northern Tallgrass Prairie, physiographic area 40, from CCRS data

**Manitoba**



Funding for the preparation of this map was provided by the National Fish and Wildlife Foundation, through a challenge grant to The Nature Conservancy, Wings of the Americas program. Matching funds for this grant were donated by Canon U.S.A., Inc.