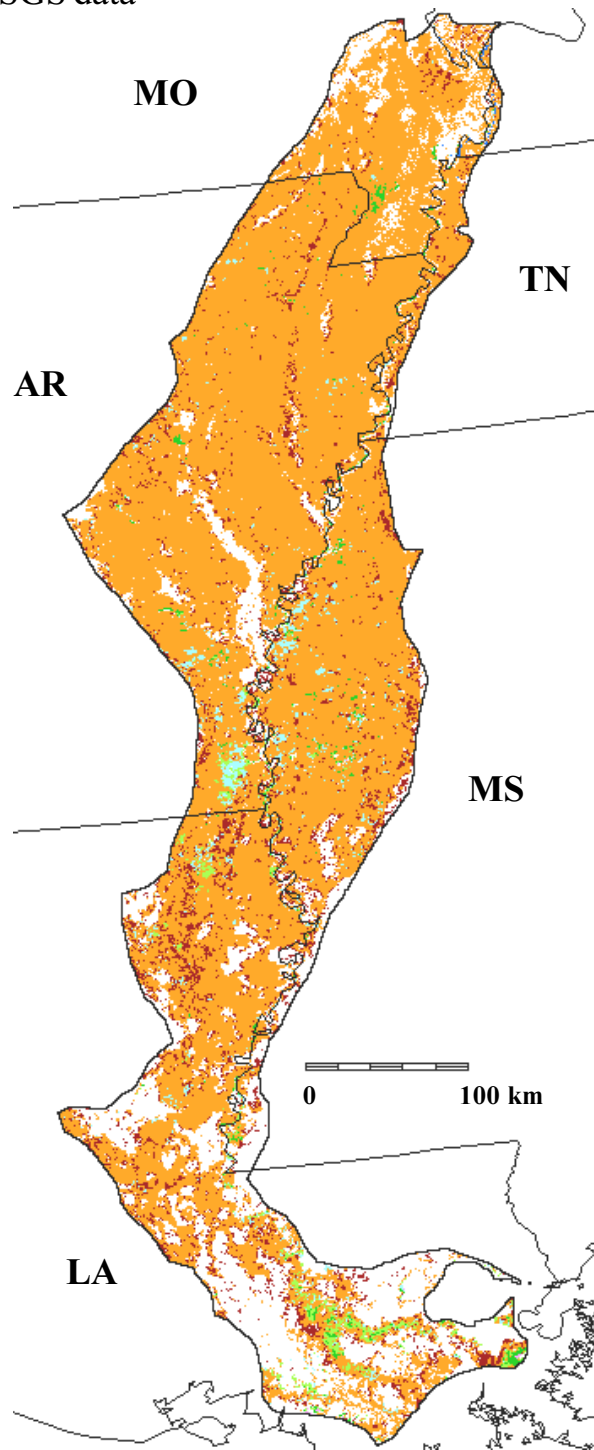










Nonforest cover types in the Mississippi Alluvial Valley, physiographic area 5,
 modified from USGS data



	Bluestem, wheatgrass grassland		Pasture, hay, mixed crops
	Grama grassland		Water
	Sagebrush, creosote brushland		Marshland
	Corn, soybeans, wheat, irrigated agriculture		Forests and water from USFS FIA data, plus urban

Funding for the preparation of this map was provided by the National Fish and Wildlife Foundation, through a challenge grant to The Nature Conservancy, Wings of the Americas program. Matching funds for this grant were donated by Canon U.S.A., Inc.