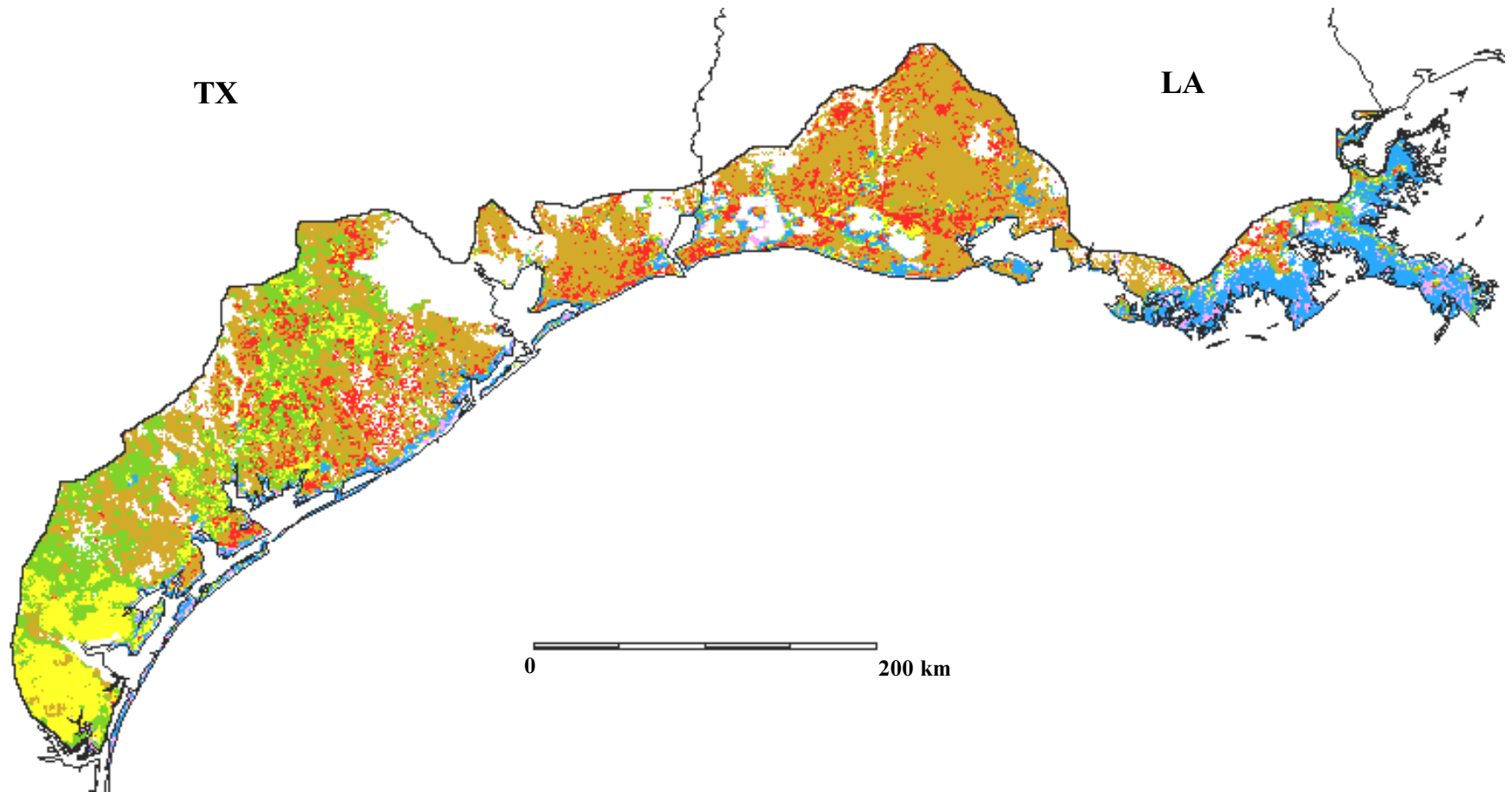


Nonforest cover types in the Coastal Prairies, physiographic area 6, modified from USGS data



	Wheat, small grain crops		Sagebrush, greasewood, creosote brushlands
	Corn, soybeans, irrigated crops		Marshland
	Bluestem, grama, wheatgrass grasslands		Barren ground, sparse vegetation
	Pasture, hay		Forest, water from USFS FIA data, plus urban

Funding for the preparation of this map was provided by the National Fish and Wildlife Foundation, through a challenge grant to The Nature Conservancy, Wings of the Americas program. Matching funds for this grant were donated by Canon U.S.A., Inc.