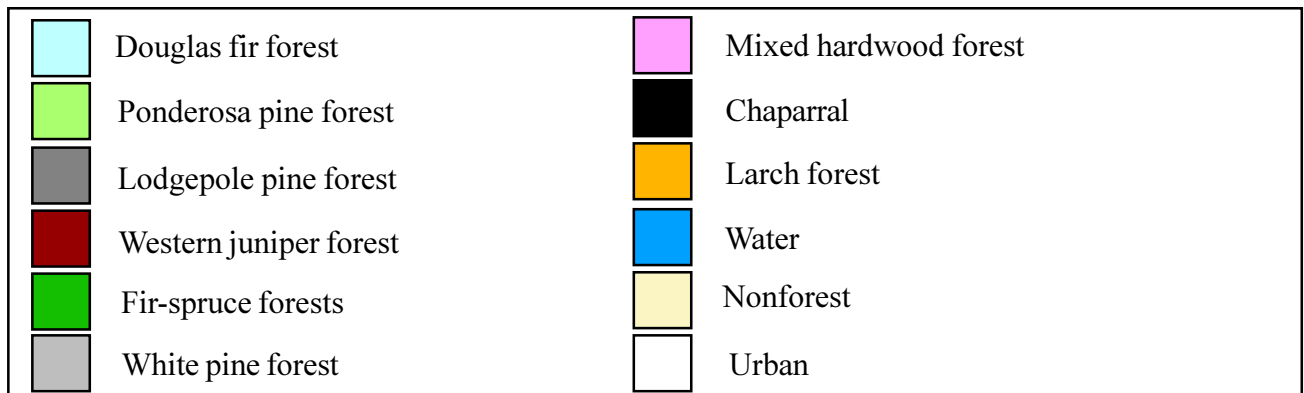
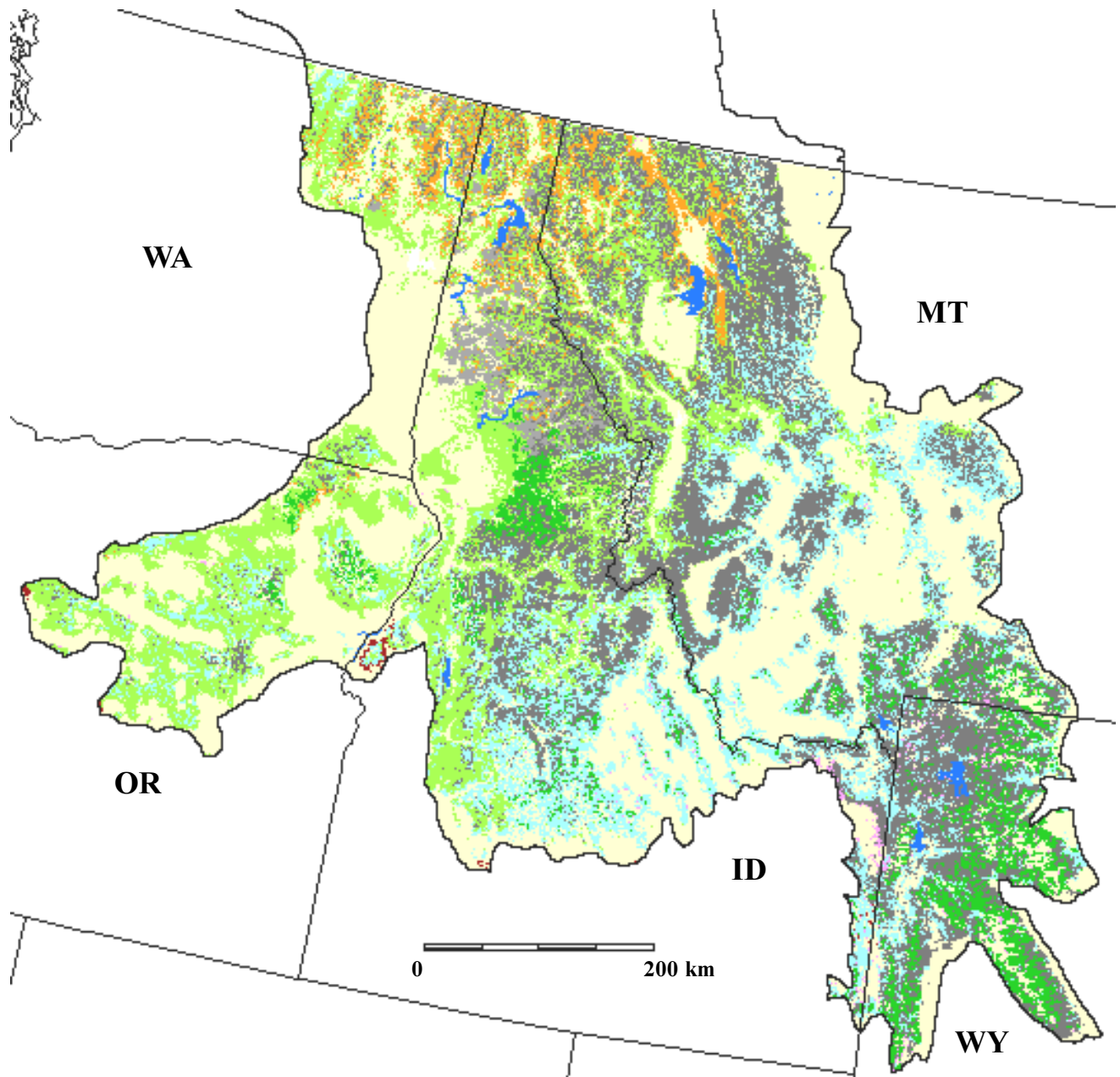


Forest types in the U.S. portion of the Central Rocky Mountains, physiographic area 64, from USFS FIA data



Funding for the preparation of this map was provided by the National Fish and Wildlife Foundation, through a challenge grant to The Nature Conservancy, Wings of the Americas program. Matching funds for this grant were donated by Canon U.S.A., Inc.