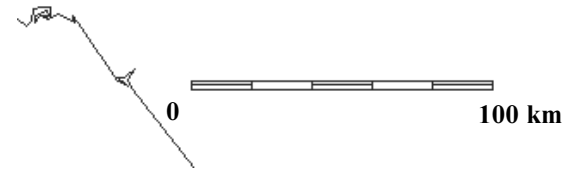
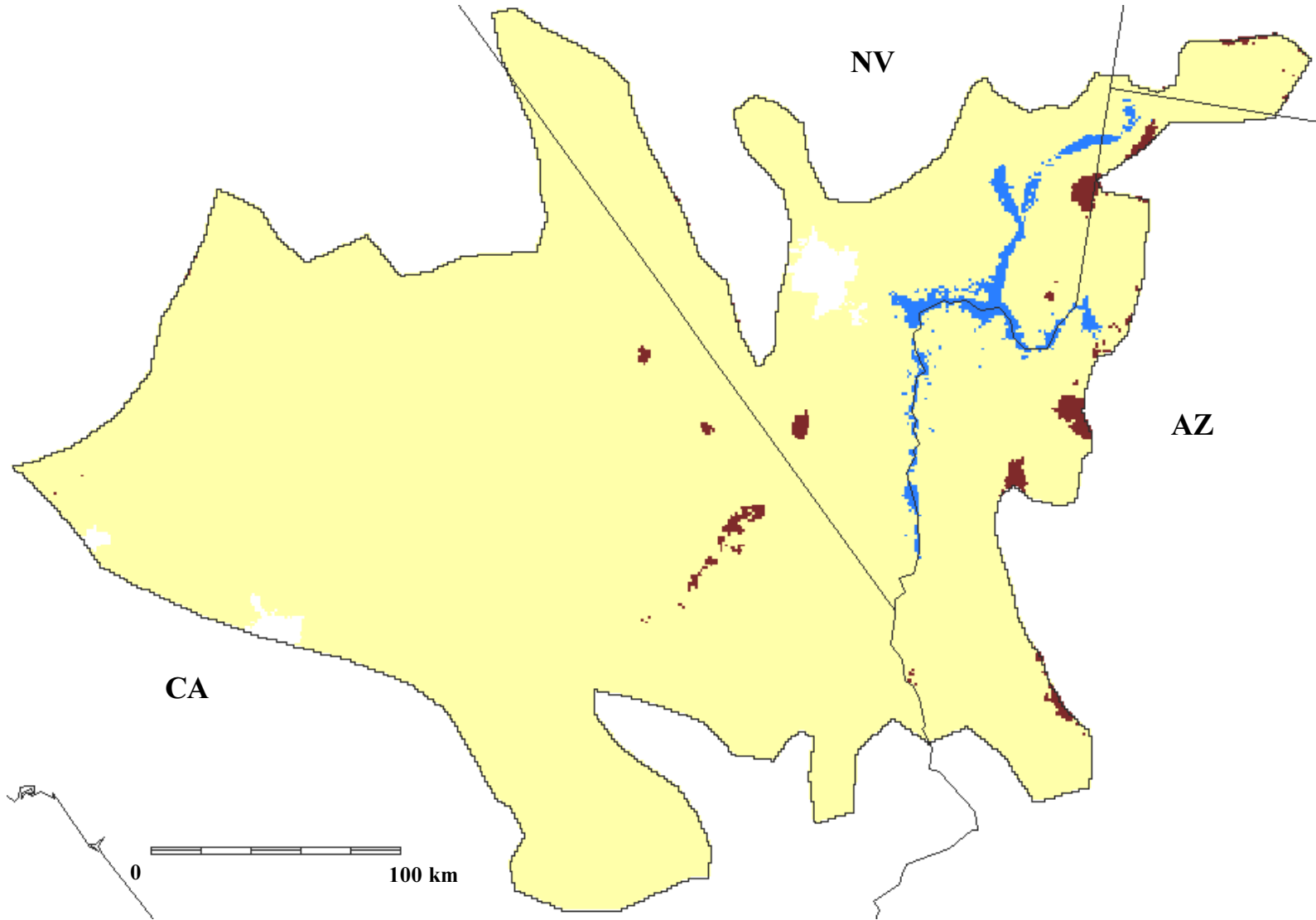





Forest types in the Mojave Desert, physiographic area 83, from USFS FIA data



| | | | |
|---|----------------------------|---|-----------|
|  | Pinyon pine-juniper forest |  | Water |
|  | Urban |  | Nonforest |

Funding for the preparation of this map was provided by the National Fish and Wildlife Foundation, through a challenge grant to The Nature Conservancy, Wings of the Americas program. Matching funds for this grant were donated by Canon U.S.A., Inc.